



# DELTA-XERO

THE FUTURE IS SYSTEM RELIABILITY

## DX1001-T

The DX modular housing arrangement offers a flexible and space conscious solution to integrate our innovative DXO Cartridge in to both new and existing systems. The Delta-Xero system can be configured up to 12 cartridges in parallel as a single unit in a compact and easily maintainable layout.

The unit can be supplied with a number of standard options to provide an effective fluid conditioning and monitoring package to suit the majority of systems. The flexibility of the unit allows tailoring to customer's specific requirements.



### DX1001-T

Drive Input	Electric or Pneumatic
Connection Ports	3/8" BSP In & Out
Flow Indicator	Visual
Suggested System Volume	Up to 4500ltrs @ 32cSt
Particulate Removal	From 0.1 $\mu$
Weight	20 kg
Dimensions	H 674 mm x D 300 mm x L 550 mm
Material	SS316
DXO Cartridge QTY	1

Flow Rate varies depending on viscosity, pressure and temperature

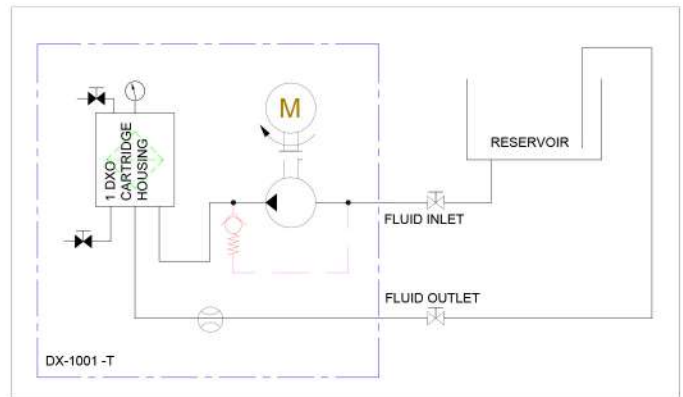
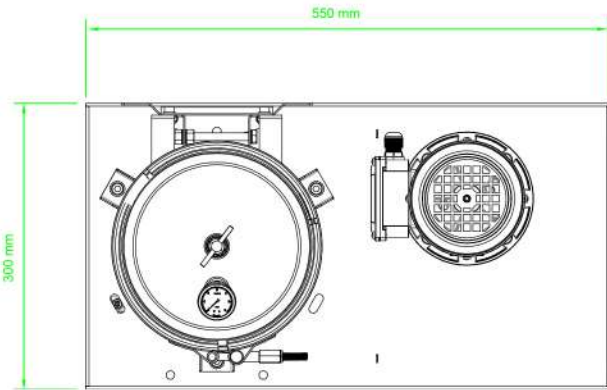
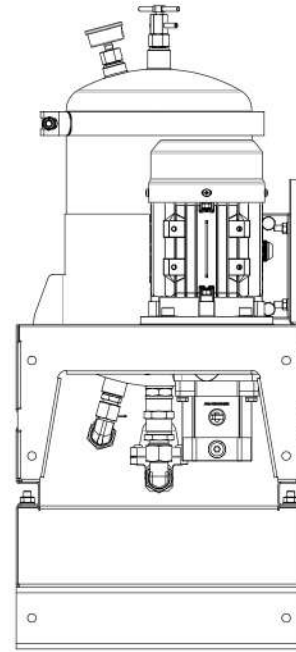
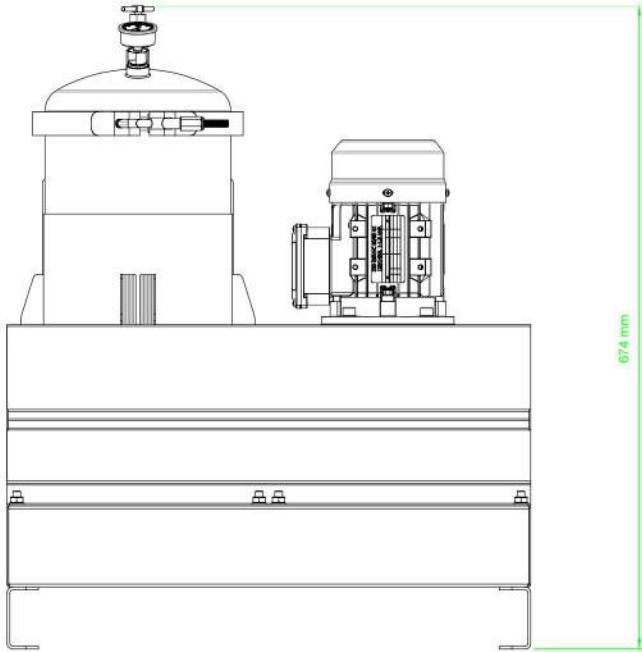
Approx flow at 2.7 bar:	32 cSt	46 cSt	68 cSt	100 cSt	220 cSt	320 cSt	460 cSt
	1.25 l/min	1.0 l/min	0.8 l/min	0.6 l/min	0.4 l/min	0.2 l/min	0.1 l/min
Oil Volume	4500ltrs	3500ltrs	3000ltrs	2400ltrs	1800ltrs	800ltrs	400ltrs



ایران - تهران - خیابان پاسداران بیست و هشتم  
پلاک ۱ - برج آبتین، طبقه ۴ - واحد ۹  
شماره تماس: ۰۲۱ ۷۳۶۴۰۰۰  
info@rnaco.com



**General Arrangement + Schematic**



**Cartridge Data: DXO**

Contaminated weight:	Up to 4.5kg per DXO
Water holding capacity, free and bound:	Approx. 2600ml
Material insert:	PP Cellulose mix



ایران - تهران - خیابان پاسداران بیست و هشتم  
پلاک ۱ - برج آبتین، طبقه ۴ - واحد ۹  
شماره تماس: ۰۲۱ ۷۳۶۴۰۰۰  
info@rnaco.com