



## DX1001-T-ATEX1

The DX modular housing arrangement offers a flexible and space conscious solution to integrating our innovative DXO Cartridge to both new and existing systems. We provide up to 12 cartridges as a single unit in a compact and easily maintainable layout with a 'push button' oil sampling port.

The unit can be supplied with a number of standard options to provide an effective conditioning and monitoring package to suit the majority of systems. The flexibility of the unit allows tailoring to a customer's specific requirements.

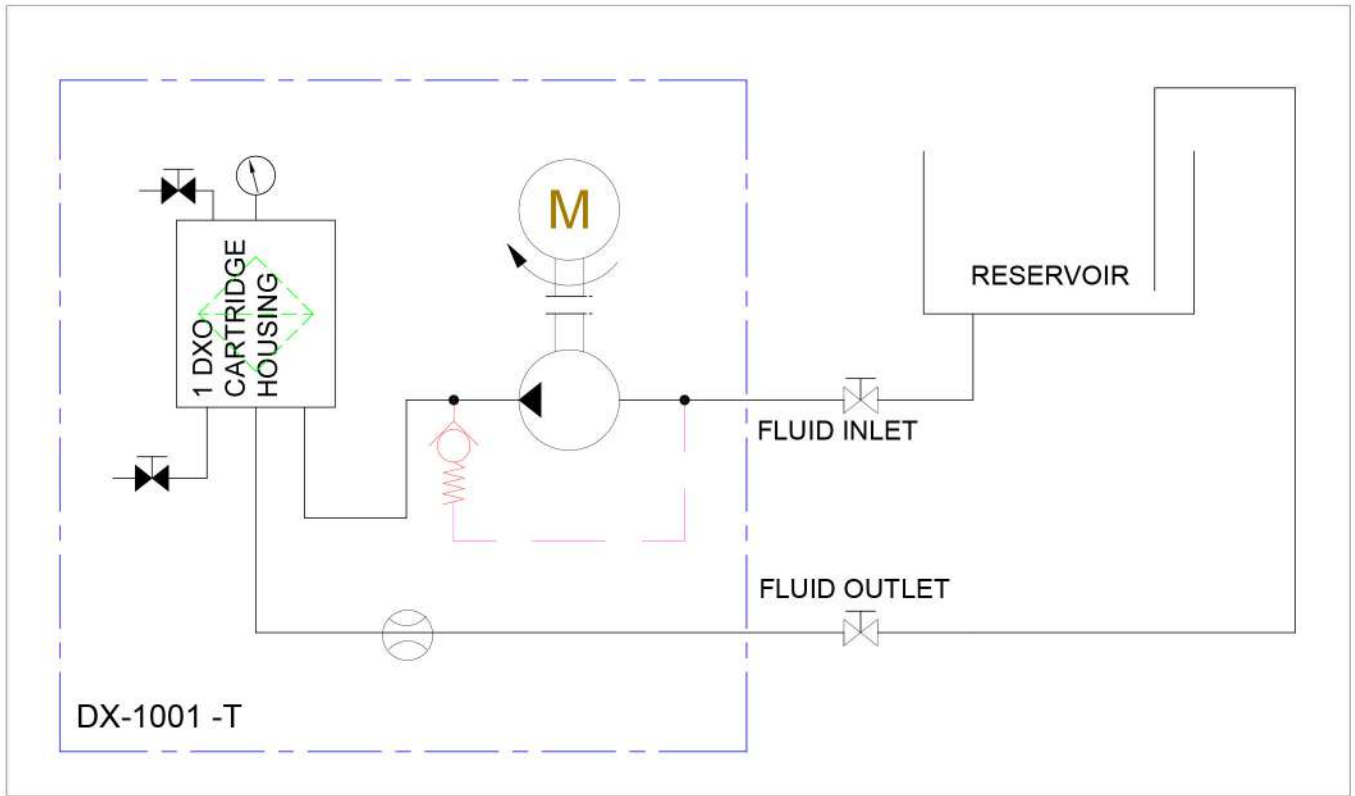


### DXO Cartridge

Dirt capacity:	4.5kg, 0.1 micron
Water absorption, free and bound:	M 2600ml
Material insert:	Cellulose, Polypropylene



## Technical Specification



### DX1001-T-ATEX1

AC Power 0,25KW , 220-400 VAC, 50/60Hz

Connection Ports 1/2" BSP In & 3/8" BSP Out

Flow Indicator Visual

Suggested System Volume 4500 litres @ 32cSt

Flow Rate (varies depending on viscosity, pressure and temperature)

Approx flow at 2.7 bar:	32 cSt	46 cSt	68 cSt	100 cSt	220 cSt	320 cSt	460 cSt
	1.25 l/min	1.0 l/min	0.8 l/min	0.6 l/min	0.4 l/min	0.2 l/min	0.1 l/min
Oil Volume	4500ltrs	3500ltrs	3000ltrs	2400ltrs	1800ltrs	800ltrs	400ltrs

Micron Rating 0.1 Micron

Weight 20kg

Measure (mm) H 674 x D 300 x L 550

Material SS316

DXO Cartridge 1

ATEX Zone II 2 G Ex db h IIC T4 Gb +1°C ≤ Ta ≤ 50°C



ایران - تهران - خیابان پاسداران بیست و هشتم  
 پلاک ۱ - برج آبتین، طبقه ۴ - واحد ۹  
 شماره تماس: ۰۲۱ ۷۳۶۴۰۰۰  
 info@rnaco.com



